



Force and Torque Data Graphing and Analysis

Software Manual

Version 4.5.4

# Table of Contents

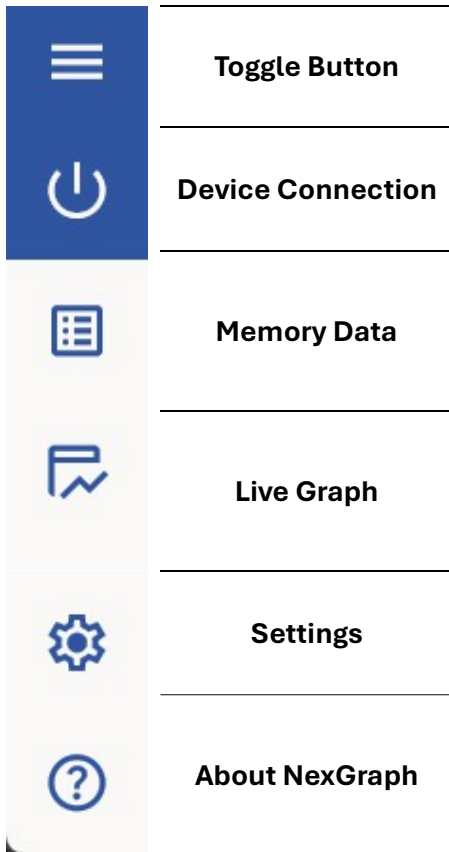
## Contents

Navigating NexGraph .....	3
Toolbar Menu and Toggle .....	3
Tooltips .....	3
NexGraph Settings .....	4
Device Setup .....	4
App Setup .....	4
Connecting Your Device.....	5
Memory Data Page .....	6
Download Button.....	6
Get Value Button .....	6
Limit Function .....	7
Manage Data .....	7
Live Graph Page .....	8
Live Testing.....	8
Manage Data .....	9
About NexGraph Page.....	9

# Navigating NexGraph

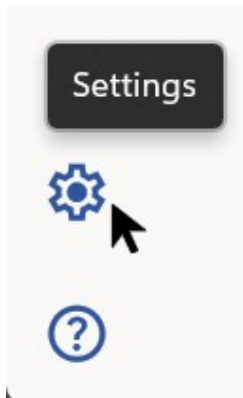
## Toolbar Menu and Toggle

The toolbar menu is always displayed until hidden by using the toggle button (hamburger icon).



## Tooltips

Hover over the buttons to see the tooltips.



# NexGraph Settings

## Device Setup

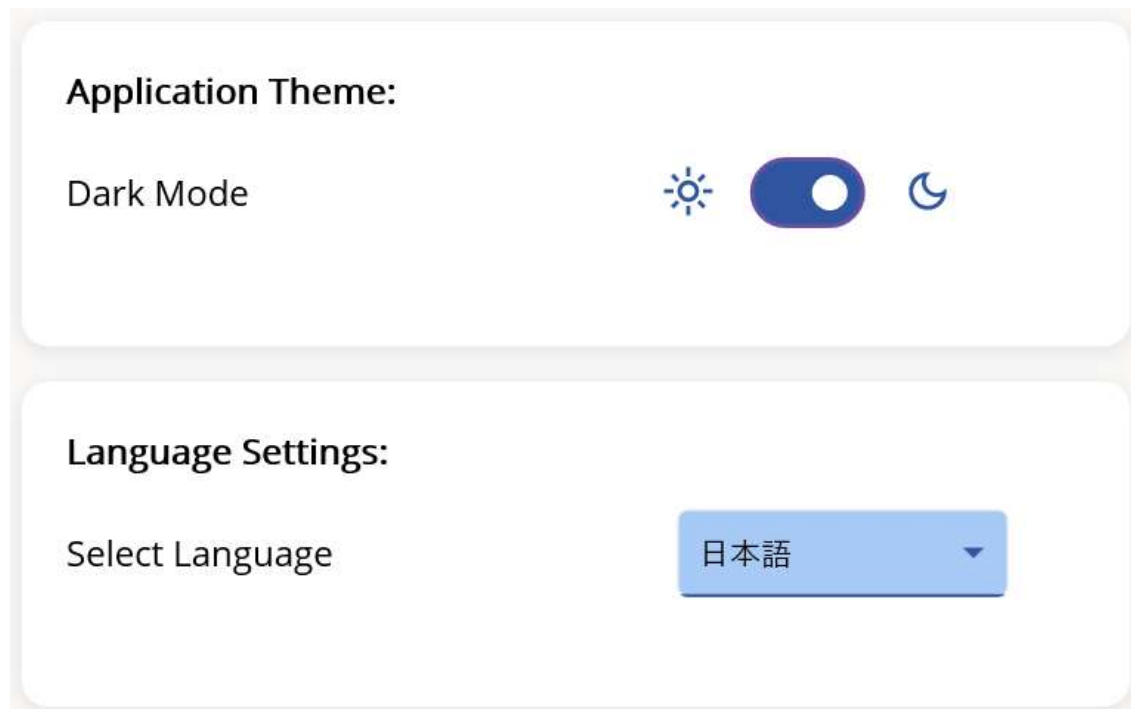
Before connecting the device, set up NexGraph for your specific needs. Navigate to the Settings Page. Select your device's brand name and model name from the dropdown box.



The screenshot shows the 'Device Setup' section of the NexGraph settings. It contains two dropdown menus. The first is labeled 'Brand:' and has 'Nextech' selected. The second is labeled 'Model:' and has 'DFS' selected, with a dropdown menu open showing 'DFS' and 'DFT' as options.

## App Setup

Select your desired theme and language (optional).



The screenshot shows the 'App Setup' section of the NexGraph settings. It contains two sections. The first is 'Application Theme:', which has 'Dark Mode' selected and a toggle switch turned on. The second is 'Language Settings:', which has 'Select Language' and a dropdown menu showing '日本語' as the selected language.

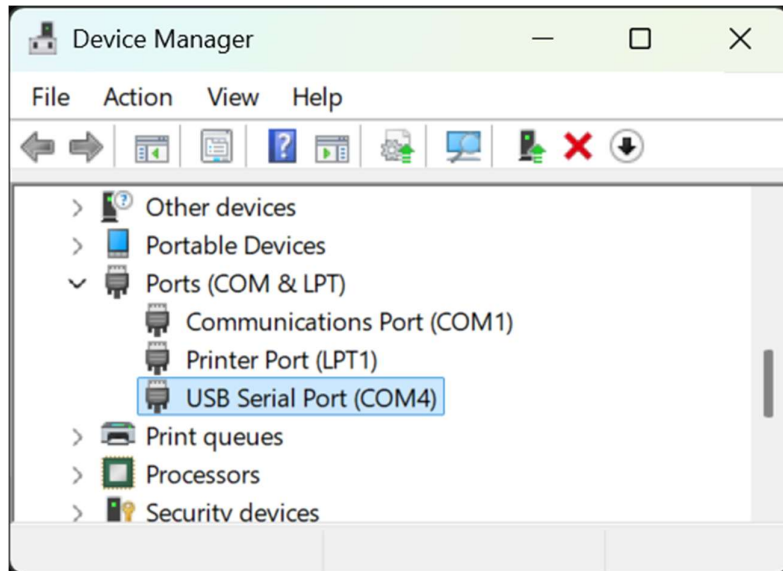
Notes:

- Exported charts and graphs will be the same color as your selected theme.
- Current torque devices do not support live testing with real-time graphs.

## Connecting Your Device

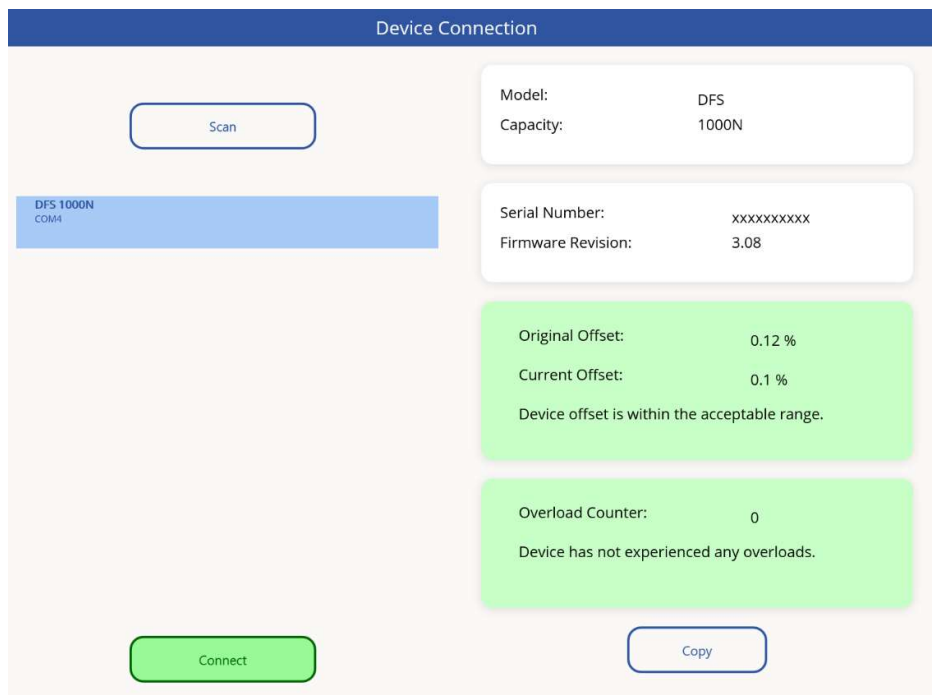
Connect your force gauge or torque tester to your computer and verify that the device has been recognized by the computer in the Device Manager.

*Note: The device information displayed may vary. A yellow warning symbol (⚠) indicates there is a connectivity error.*



On the Device Connection page, click Scan to search for the connected device. Select the device from the list and click Connect. Device information will be displayed for the selected device.

*Note: For DFT models, an additional option will be provided to choose between USB and Bluetooth connectivity. Please refer to your device manual for more information.*



# Memory Data Page

## Download Button



The “Download” button retrieves saved data from the device memory. Stored memory data can also be sent from the device using the menu for supported models. For Sauter’s FS model, sending “peak” and “manual” files is supported. Please refer to your device’s user manual for more information.

Feature Support:

Download Button	
Brand	Models
Nextech	DFS, DFT, DTT
Sauter	FL
ASG	DTT

Send From Device Menu	
Brand	Models
Nextech	CTS, DTS, DTT
Sauter	FS, DA, DB
ASG	DTT, DTT-L

## Get Value Button



The “Get Value” button adds the currently displayed value from the device to the table. Displayed values can also be sent from the device using the “Print” button if available.

Feature Support:

Get Value Button	
Brand	Models
Nextech	DFS, DFT (Peak, Live)
Sauter	FL (Peak, Live), FS (Live)

Device Print Button	
Brand	Models
Nextech	DFS, DFT, CTS, DTS, DTT
Sauter	FL, DA, DB
ASG	DTT, DTT-L

## Limit Function

Limit Function  
☒

Upper Limit  
65.0000

Lower Limit  
40.0000

100

5

6

Number	Force	Unit	Direction
016	51.8	N	Compression
017	38.4	N	Compression
018	90.8	N	Compression

Enable pass and fail highlighting by toggling the Limit Function. Enter the desired upper and lower limit values. Press the “Tab” key or “Enter” key to accept the value.

## Manage Data



Export Button: Save the data (CSV) and chart (PNG). The CSV file is saved to your “Documents” folder. The PNG image file is saved to your “Pictures” folder.

*Note: The chart size is equivalent to the size of the application window.*

Copy Button: Copy the entire data set or select the value(s) to copy to the clipboard.

Delete Button: Delete the entire data set or select the value(s) to delete.

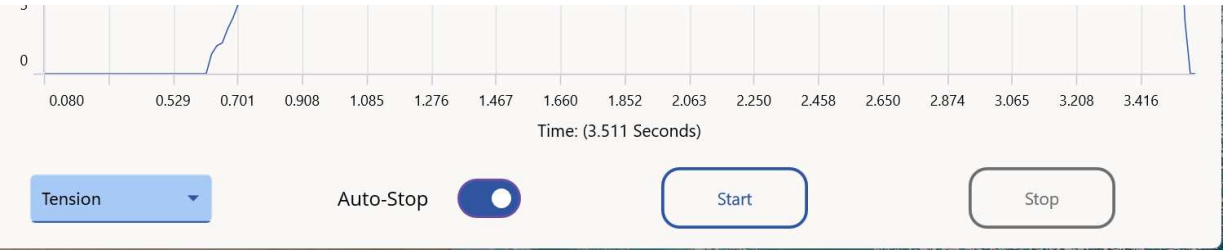
Swiping a row on the data table to copy or delete is also supported.

016	50.0	N	Compression	
	019	45.0	N	Compres
020	30.0	N	Compression	

017	38.4	N	Compression	
	90.8	N	Compression	
019	45.0	N	Compression	

# Live Graph Page

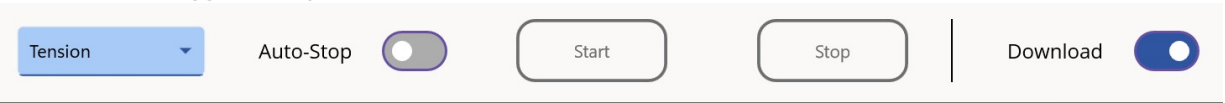
## Live Testing



View a live graph of the data while recording a measurement with your force gauge. Select a measurement direction, either tension (pull force) or compression (push force), from the dropdown box. The “Auto-Stop” toggle will automatically stop the recording when zero values are read.

*Notes (Sauter FS model only):*

- The “Readability STEP factor” must be at least 5 or higher for Auto-Stop to work correctly.
- Saved “track” files can be sent from the FS force gauge on this page by enabling the “Download” toggle. Only one file can be sent at a time.





## Manage Data



Add Max Value: Add the max (peak) value to the table on the Memory Data page.

Copy Max Value: Copies the max (peak) value to the clipboard.



Export Button: Save the data (CSV) and graph (PNG). The CSV file is saved to your “Documents” folder. The PNG image file is saved to your “Pictures” folder.

*Note: The graph size is equivalent to the size of the application window.*

Copy Button: Copy the entire data set or select the value(s) to copy to the clipboard.

Delete Button: Delete the entire data set or select the value(s) to delete.

Swiping a row on the data table to copy or delete is also supported.

3.352	44.2	N	Tension	
	3.352	44.2	N	Tension
3.352	44.2	N	Tension	

0.590	0.0	N	Tension	
	0.0	N	Tension	
0.632	1.1	N	Tension	

## About NexGraph Page

View information about NexGraph and save the application log from this page. Logs are saved as a zip file in your “Documents” folder. For questions, feedback, or issues with NexGraph, please email: [support@nexgraphapp.com](mailto:support@nexgraphapp.com).

Thank you for using NexGraph!